

300 Series Transfer Latching

**Specifications**

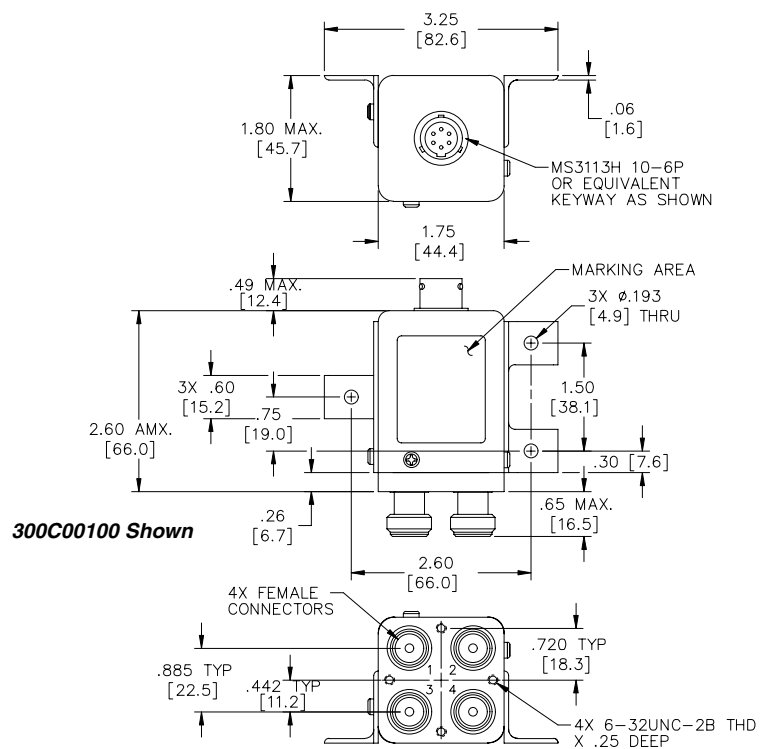
- Operating Voltage:**  
(across temperature range)  
28 Vdc (20-30 Vdc)
- Coil Current (max @ nom.Vdc & 20°C):**  
28 Vdc 650mA
- Switching Time:**  
20 mS maximum
- Operating Temperature:**  
-55°C to +85°C
- Mechanical Life, Cycles:**  
100,000 minimum
- Vibration, Operating:**  
20g's sine/random
- Mechanical Shock, Non-Operating:**  
50G, 1/2 Sine, 11mS
- Nominal Weight:**  
12 oz., (340g.)

**RF Characteristics**

Frequency GHz	VSWR (max)	Isolation dB (min)	Ins. Loss dB (max)
0-1	1.20	60	0.15
1-4	1.35	60	0.25
4-8	1.45	60	0.35
8-12.4	1.50	60	0.50

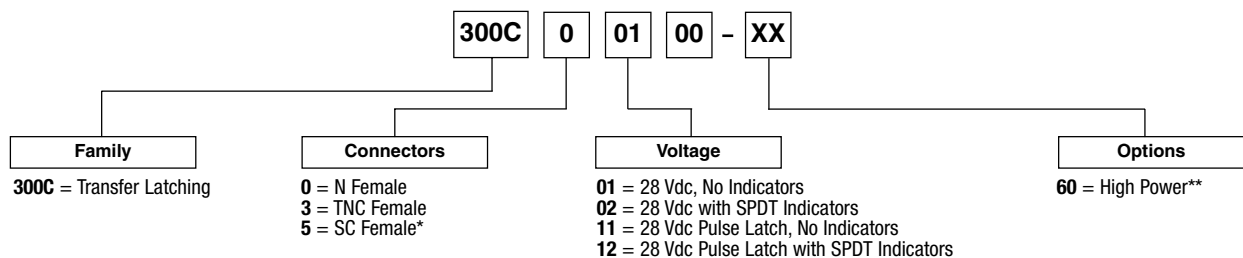
Note: RF Characteristics are for type N & TNC Female connectors, consult Dow-Key for other connector configurations

**Mechanical**



For Electrical Schematic see page # 2-11

**Part Number Selection**



\*1" connector spacing  
Consult Dow-Key for Dimensions

\*\*Consult Power Chart on page #