

**310 Series
Transfer Failsafe**

Specifications

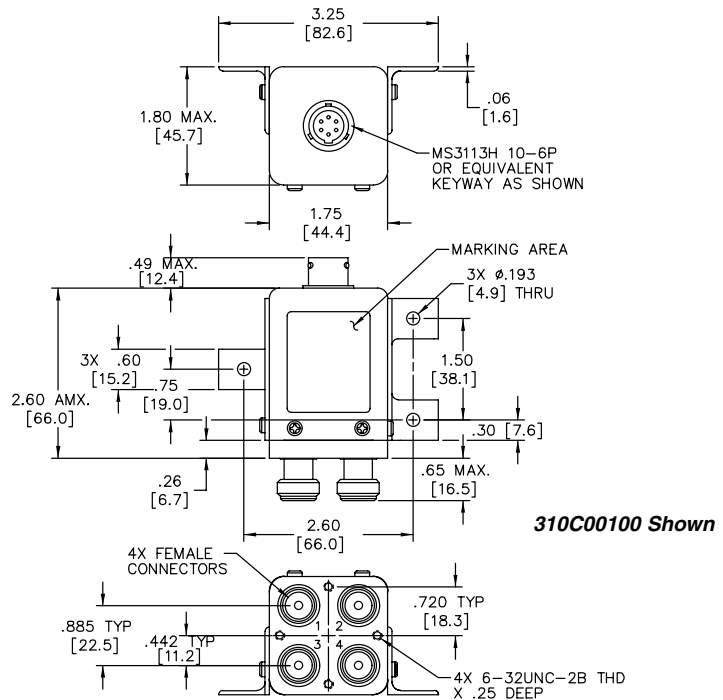
- Operating Voltage:**
(across temperature range)
28 Vdc (20-30 Vdc)
- Coil Current (max @ nom.Vdc & 20°C):**
28 Vdc 250mA
- Switching Time:**
20 mS maximum
- Operating Temperature:**
-55°C to +85°C
- Mechanical Life, Cycles:**
100,000 minimum
- Vibration, Operating:**
20g's sine/random
- Mechanical Shock, Non-Operating:**
50G, 1/2 Sine, 11mS
- Nominal Weight:**
12 oz., (340g.)

RF Characteristics

Frequency GHz	VSWR (max)	Isolation dB (min)	Ins. Loss dB (max)
0-1	1.20	60	0.15
1-4	1.35	60	0.25
4-8	1.45	60	0.35
8-12.4	1.50	60	0.50

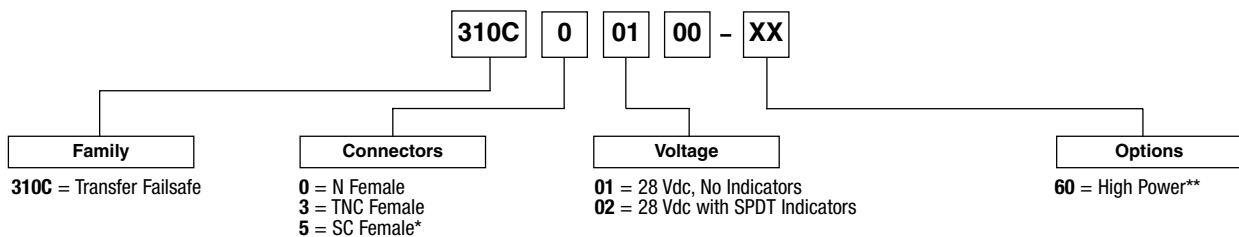
Note: RF Characteristics are for type N & TNC Female connectors, consult Dow-Key for other connector configurations

Mechanical



Part Number Selection

For Electrical Schematic see page # 2-11



*1" connector spacing
Consult Dow-Key for Dimensions

**Consult Power Chart on page #