

RF Characteristics



Frequency GHz	VSWR (max)	Isolation dB (min)	Ins. Loss dB (max)
0-1	1.10	85	0.10
1-4	1.15	80	0.15
4-8	1.20	70	0.20
8-12	1.30	65	0.30
12-18	1.35	60	0.35
*18-26.5	1.50	55	0.50

* "K" option only. Ex: 401K-2208
 Note: Typical performance dependent on selected options

401 Series SPDT Failsafe, SMA

Specifications

Operating Voltage:

(across temperature range)
 12 Vdc (11-14 Vdc)
 28 Vdc (24-32 Vdc)

Coil Current (max @ nom.Vdc & 20°C):

12 Vdc 195 mA
 28 Vdc 95 mA

Switching Time:

15 mS maximum

Operating Temperature:

-25°C to +65°C (Standard)
 -55°C to +85°C (Extended "T" Option)

Mechanical Life, Cycles:

1,000,000 minimum

Vibration, Operating:

10G RMS, 20-2000 Hz

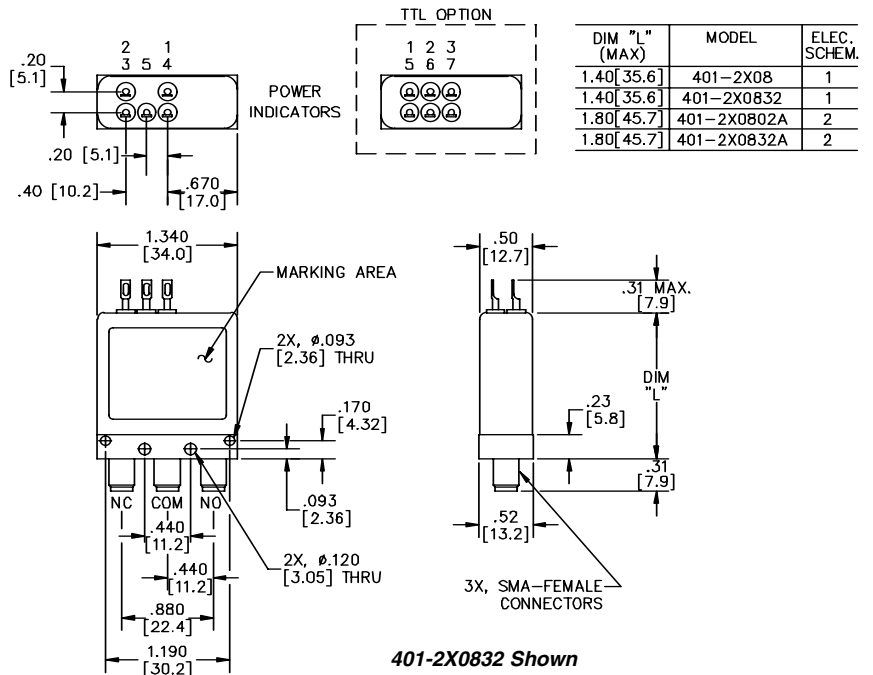
Mechanical Shock, Non-Operating:

50G, 1/2 Sine, 11mS

Nominal Weight:

2.5 oz., (71g.)

Mechanical



Part Number Selection

For Electrical Schematic see page # 1-5

401 J - 2 2 08 02 A

Special Options	Actuator	Coil Voltage	Connectors	Indicators	Circuit Options
A = High Power I = Immersion Seal J = 'D' Connector K = 26.5 GHz M = 5mS S = Epoxy Seal T = -55°C to + 85°C	2 = Failsafe 6 = Failsafe with Suppression Diode	2 = 12Vdc 3 = 28Vdc 7 = 20Vdc 8 = 24Vdc 9 = 15Vdc	08 = SMA Female 19 = Pins, PC Board Mount	02 = No Indicators 32 = Indicators	A = TTL High B = JANTX TTL High L = TTL Low