

RF Characteristics



Frequency GHz	VSWR (max)	Isolation dB (min)	Ins. Loss dB (max)
0-1	1.15	85	0.15
1-2	1.20	80	0.20
2-4	1.25	70	0.25
4-8	1.35	60	0.40
8-12.4	1.50	60	0.50

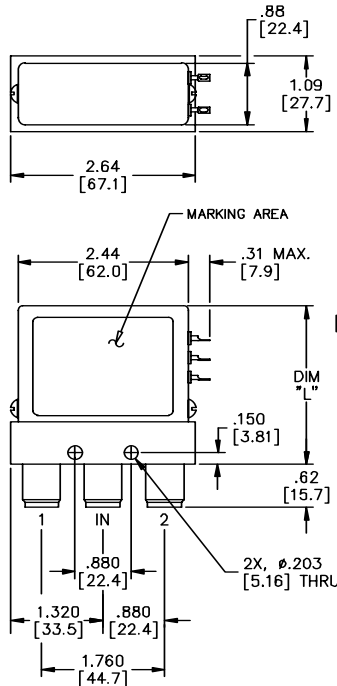
Note: RF characteristics are for Type N & TNC female connectors, consult Dow-Key for other connector configurations

402 Series SPDT Latching with Indicator Option, N

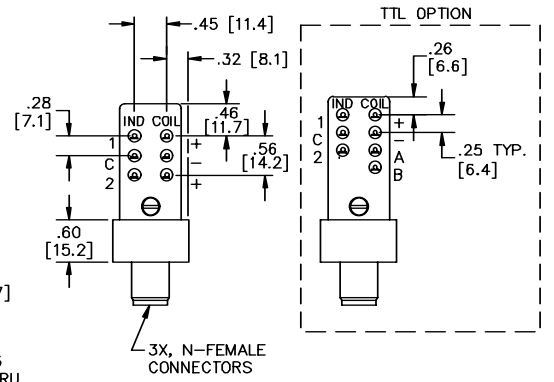
Mechanical

Specifications

- Operating Voltage:**
(across temperature range)
12 Vdc (11-14 Vdc)
28 Vdc (24-32 Vdc)
- Coil Current (max @ nom.Vdc & 20°C):**
12 Vdc 320 mA
28 Vdc 135 mA
- Switching Time:**
20 mS maximum
- Operating Temperature:**
-25°C to +65°C (Standard)
-55°C to +85°C (Extended "T" Option)
- Mechanical Life, Cycles:**
1,000,000 minimum
- Vibration, Operating:**
10G RMS, 20-2000 Hz
- Mechanical Shock, Non-Operating:**
50 G, 1/2 Sine, 11 mS
- Nominal Weight:**
9.0 oz. (260g.)



DIM "L" (MAX)	MODEL	ELEC. SCHEM.
2.30 [58.4]	402-3X01	3
2.30 [58.4]	402-3X0132	3
2.40 [61.0]	402-4X01	4
2.40 [61.0]	402-4X0132	4
2.40 [61.0]	402-4X0102A	5
2.40 [61.0]	402-4X0132A	5



402-3X0132 Shown

Part Number Selection

For Electrical Schematic see page # 1-8

402 J - 4 2 01 02 A

Special Options	Actuator	Coil Voltage	Connectors	Indicators	Circuit Options
A = High Power J = 'D' Connector P = Power Connector R = (+) Com T = -55°C to + 85°C	3 = Pulse Latching 4 = Latching Self Cutoff 7 = Pulse Latching with Suppression Diodes	2 = 12Vdc 3 = 28Vdc 4 = 48Vdc 7 = 20Vdc 8 = 24Vdc 9 = 15Vdc	01 = N Female 02 = BNC Female 03 = TNC Female 53 = SC Female*	02 = No Indicators 32 = Indicators	A = TTL High L = TTL Low

*1" connector spacing
Consult Dow-Key for dimensions