

RF Characteristics



Frequency GHz	VSWR (max)	Isolation dB (min)	Ins. Loss dB (max)
0-1	1.15	85	0.15
1-2	1.20	80	0.20
2-4	1.25	70	0.25
4-8	1.45	60	0.40
8-12.4	1.60	60	0.50

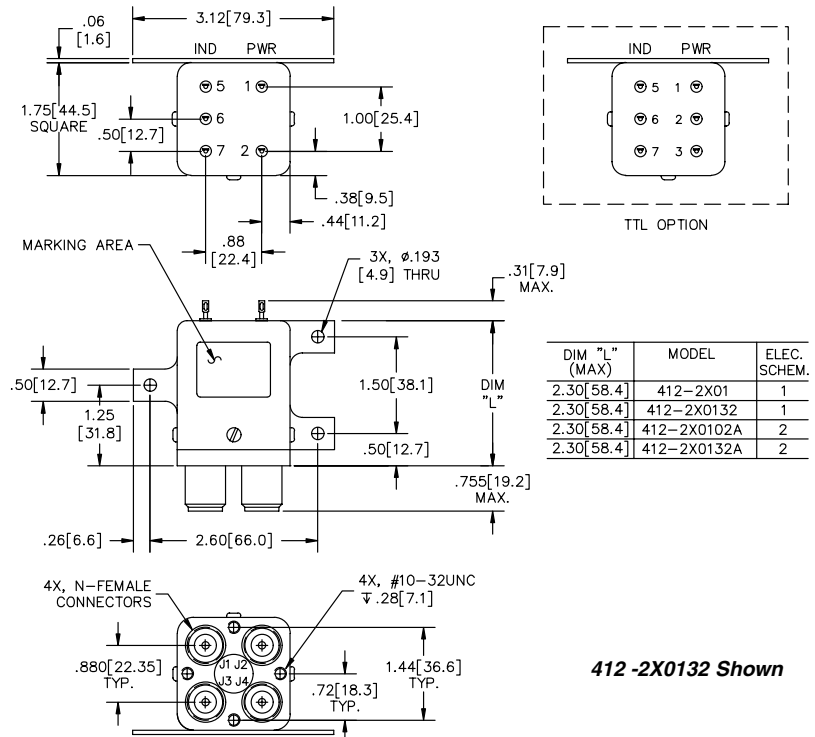
Note: RF characteristics for Type N & TNC female connectors, consult Dow-Key for other connector configurations

412 Series Transfer Failsafe, N

Specifications

- Operating Voltage:**
(across temperature range)
12 Vdc (11-14 Vdc)
28 Vdc (24-32 Vdc)
- Coil Current (max @ nom.Vdc & 20°C):**
12 Vdc 320 mA
28 Vdc 185 mA
- Switching Time:**
20 mS maximum
- Operating Temperature:**
-25°C to +65°C (Standard)
-55°C to +85°C (Extended "T" Option)
- Mechanical Life, Cycles:**
1,000,000 minimum
- Vibration, Operating:**
10 G RMS, 20-2000 Hz
- Mechanical Shock, Non-Operating:**
30 G, 1/2 Sine, 11 mS
- Nominal Weight:**
14 oz., (397g.)

Mechanical



For Electrical Schematic see page # 2-6

Part Number Selection

