

710 Series Transfer Failsafe

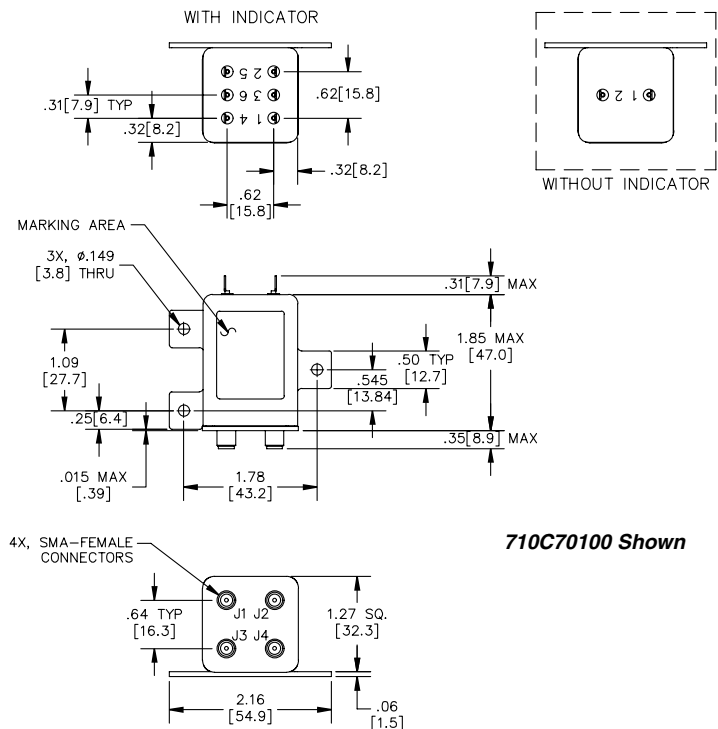
**RF Characteristics**

| Frequency GHz | VSWR (max) | Isolation dB (min) | Ins. Loss dB (max) |
|---------------|------------|--------------------|--------------------|
| 0-1           | 1.15       | 75                 | 0.15               |
| 1-4           | 1.25       | 60                 | 0.20               |
| 4-8           | 1.35       | 60                 | 0.35               |
| 8-12.4        | 1.50       | 60                 | 0.50               |
| 12.4-18       | 1.50       | 60                 | 0.50               |

**Specifications**

- Operating Voltage:**  
(across temperature range)  
28 Vdc (20-30 Vdc)
- Coil Current (max @ nom.Vdc & 20°C):**  
28 Vdc 120mA
- Switching Time:**  
20 mS maximum
- Operating Temperature:**  
-55°C to +85°C
- Mechanical Life, Cycles:**  
100,000 minimum
- Vibration, Operating:**  
20g's sine/random
- Mechanical Shock, Non-Operating:**  
50G, 1/2 Sine, 11mS
- Nominal Weight:**  
3.5 oz., (100g.)

**Mechanical**



For Electrical Schematic see page # 2-11

**Part Number Selection**

